

Shapefile\_4

Site Type: Custom Shapefile

Summary	2000	2009	2014
Population	2,257	2,228	2,202
Households	1,020	1,022	1,015
Families	680	660	648
Average Household Size	2.21	2.18	2.17
Owner Occupied HUs	647	643	640
Renter Occupied HUs	373	379	376
Median Age	38.2	40.2	41.1

Trends: 2009-2014 Annual Rate	Area	State	National
Population	-0.23%	0%	0.91%
Households	-0.14%	0%	0.94%
Families	-0.37%	0%	0.74%
Owner HHs	-0.09%	0%	1.19%
Median Household Income	1.35%	0%	0.80%

Households by Income	2000		2009		2014	
	Number	Percent	Number	Percent	Number	Percent
< \$15,000	252	24.3%	187	18.2%	175	17.2%
\$15,000 - \$24,999	238	22.9%	197	19.2%	188	18.5%
\$25,000 - \$34,999	153	14.7%	132	12.9%	121	11.9%
\$35,000 - \$49,999	187	18.0%	156	15.2%	171	16.8%
\$50,000 - \$74,999	131	12.6%	226	22.0%	236	23.3%
\$75,000 - \$99,999	51	4.9%	69	6.7%	66	6.5%
\$100,000 - \$149,999	16	1.5%	41	4.0%	41	4.0%
\$150,000 - \$199,000	4	0.4%	8	0.8%	8	0.8%
\$200,000+	6	0.6%	9	0.9%	9	0.9%
Median Household Income	\$26,577		\$34,675		\$37,071	
Average Household Income	\$35,887		\$44,467		\$45,622	
Per Capita Income	\$15,969		\$19,890		\$20,442	

Population by Age	2000		2009		2014	
	Number	Percent	Number	Percent	Number	Percent
0 - 4	154	6.8%	149	6.7%	143	6.5%
5 - 9	160	7.1%	144	6.5%	137	6.2%
10 - 14	141	6.3%	143	6.4%	138	6.3%
15 - 19	123	5.5%	144	6.5%	135	6.1%
20 - 24	121	5.4%	134	6.0%	145	6.6%
25 - 34	318	14.1%	249	11.2%	255	11.6%
35 - 44	317	14.1%	297	13.3%	256	11.6%
45 - 54	323	14.3%	305	13.7%	294	13.3%
55 - 64	224	9.9%	293	13.1%	282	12.8%
65 - 74	209	9.3%	184	8.3%	227	10.3%
75 - 84	136	6.0%	138	6.2%	136	6.2%
85+	30	1.3%	49	2.2%	55	2.5%

Race and Ethnicity	2000		2009		2014	
	Number	Percent	Number	Percent	Number	Percent
White Alone	1,880	83.3%	1,816	81.5%	1,771	80.4%
Black Alone	312	13.8%	320	14.4%	320	14.5%
American Indian Alone	1	0.0%	1	0.0%	1	0.0%
Asian Alone	4	0.2%	5	0.2%	6	0.3%
Pacific Islander Alone	0	0.0%	0	0.0%	0	0.0%
Some Other Race Alone	34	1.5%	52	2.3%	65	3.0%
Two or More Races	27	1.2%	35	1.6%	39	1.8%
Hispanic Origin (Any Race)	92	4.1%	126	5.7%	151	6.9%

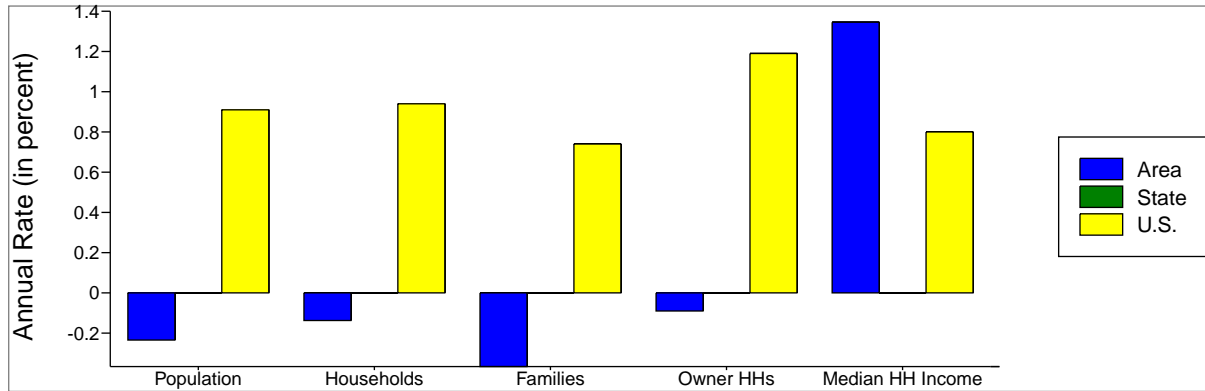
Data Note: Income is expressed in current dollars.

Source: U.S. Bureau of the Census, 2000 Census of Population and Housing. ESRI forecasts for 2009 and 2014.

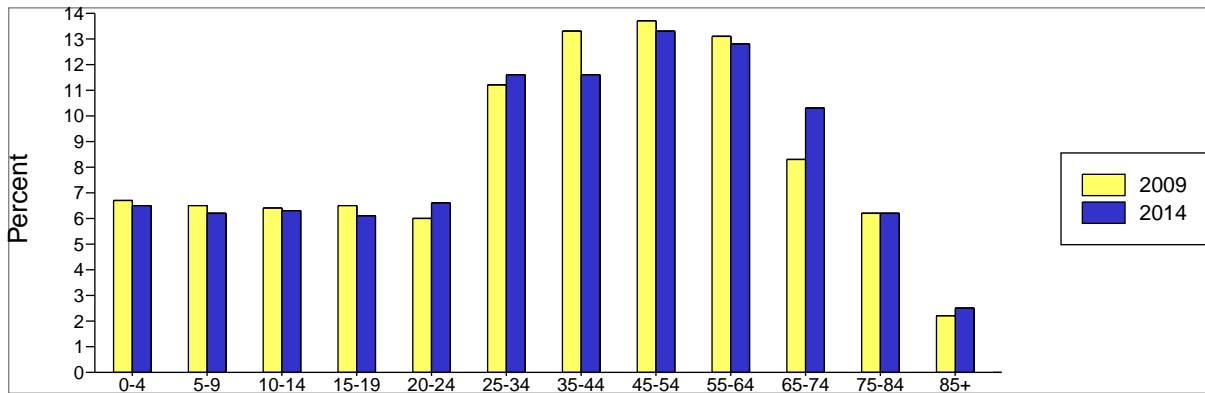
Shapefile\_4

Site Type: Custom Shapefile

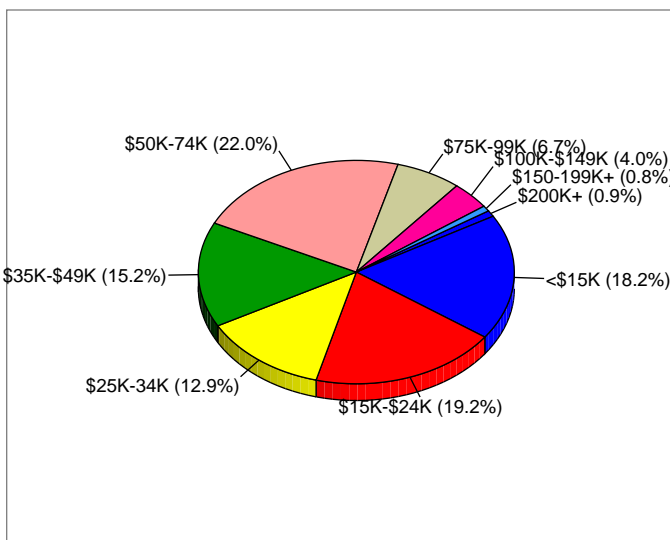
Trends 2009-2014



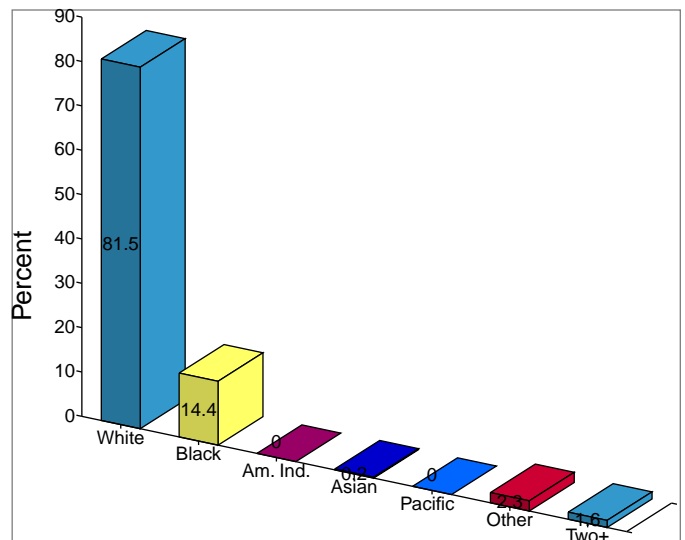
Population by Age



2009 Household Income



2009 Population by Race



2009 Percent Hispanic Origin: 5.7%